

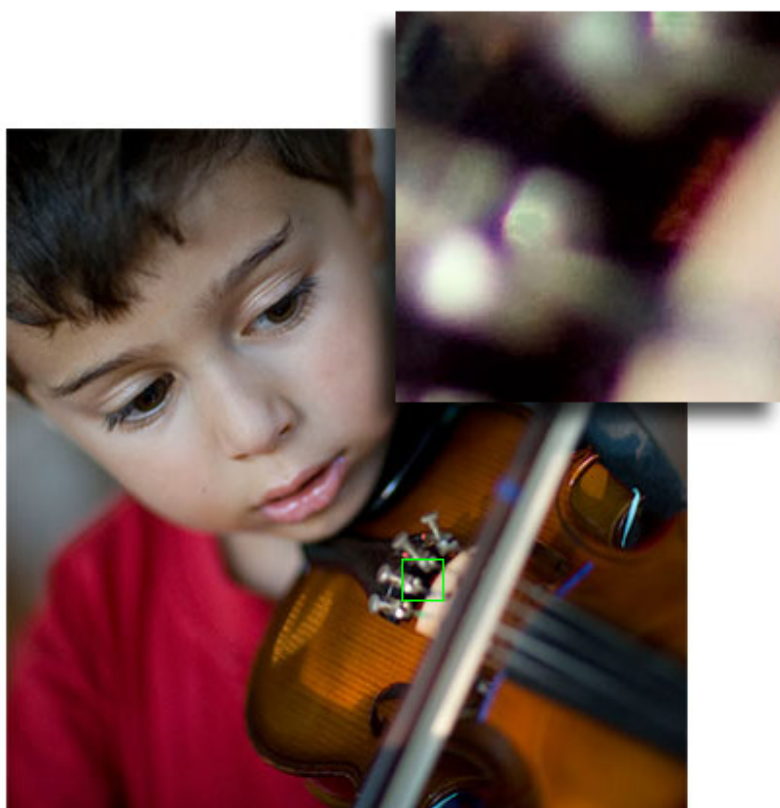
TrueGrain is a pro-grade tool for accurately recapturing the aesthetics of black and white film with digital photography.

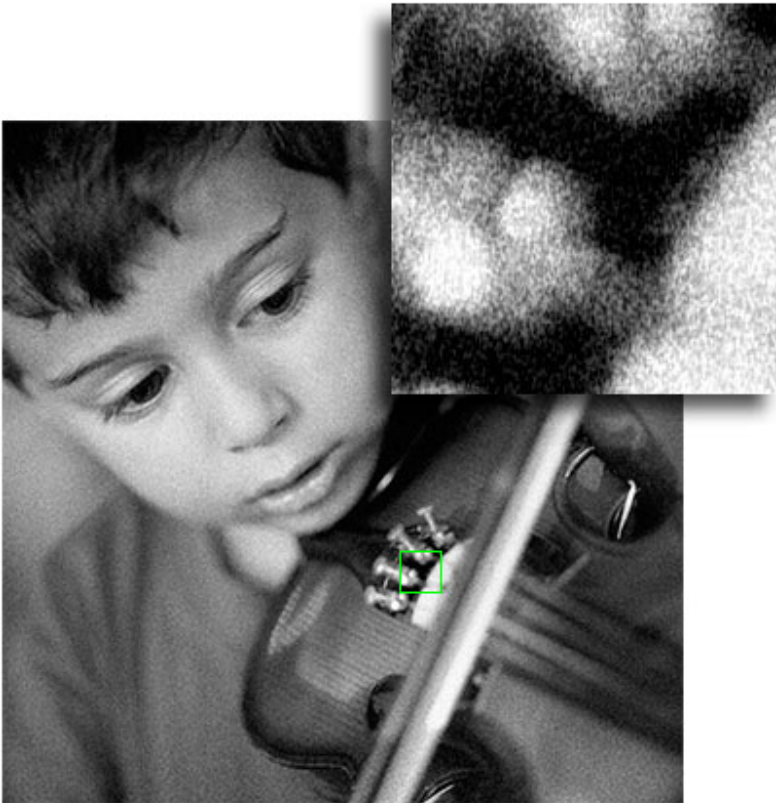
With **TrueGrain**, you can:

- Accurately recapture the aesthetics of particular film stocks—including “lost” films—while retaining an all-digital workflow.
- Creatively employ credible film aesthetics.
- Add high resolution film grain information to digital images to elegantly minimize the pixilation effects of upsampling.
- Match digital imagery to existing film images for restoration and compositing purposes.

The following example demonstrates a straightforward aesthetic application of TrueGrain at

both the macro (9.5:1) and micro (1:1) levels:





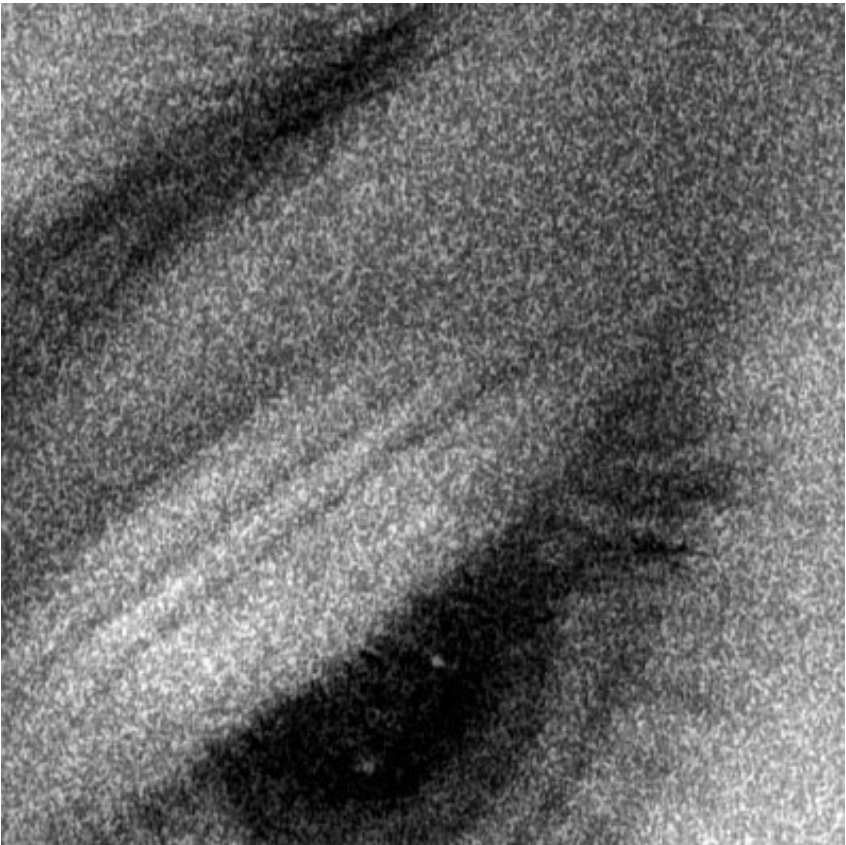
Which of the look of film will tell you the grain is better? The film that is in the film does not have a grainy texture, but the grain is still visible in the film.





Example 2



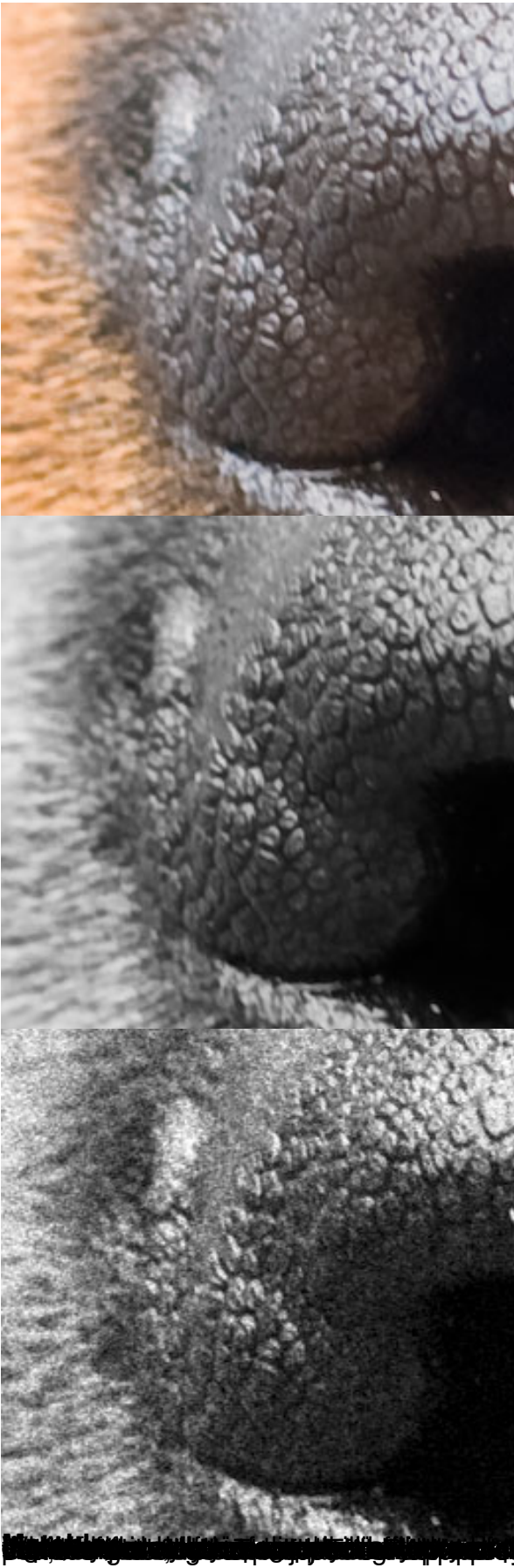


and off on the left, the grain is fine and the image is sharp. The image is a close-up of a dog's face, showing the snout and the eyes. The image is a close-up of a dog's face, showing the snout and the eyes. The image is a close-up of a dog's face, showing the snout and the eyes.

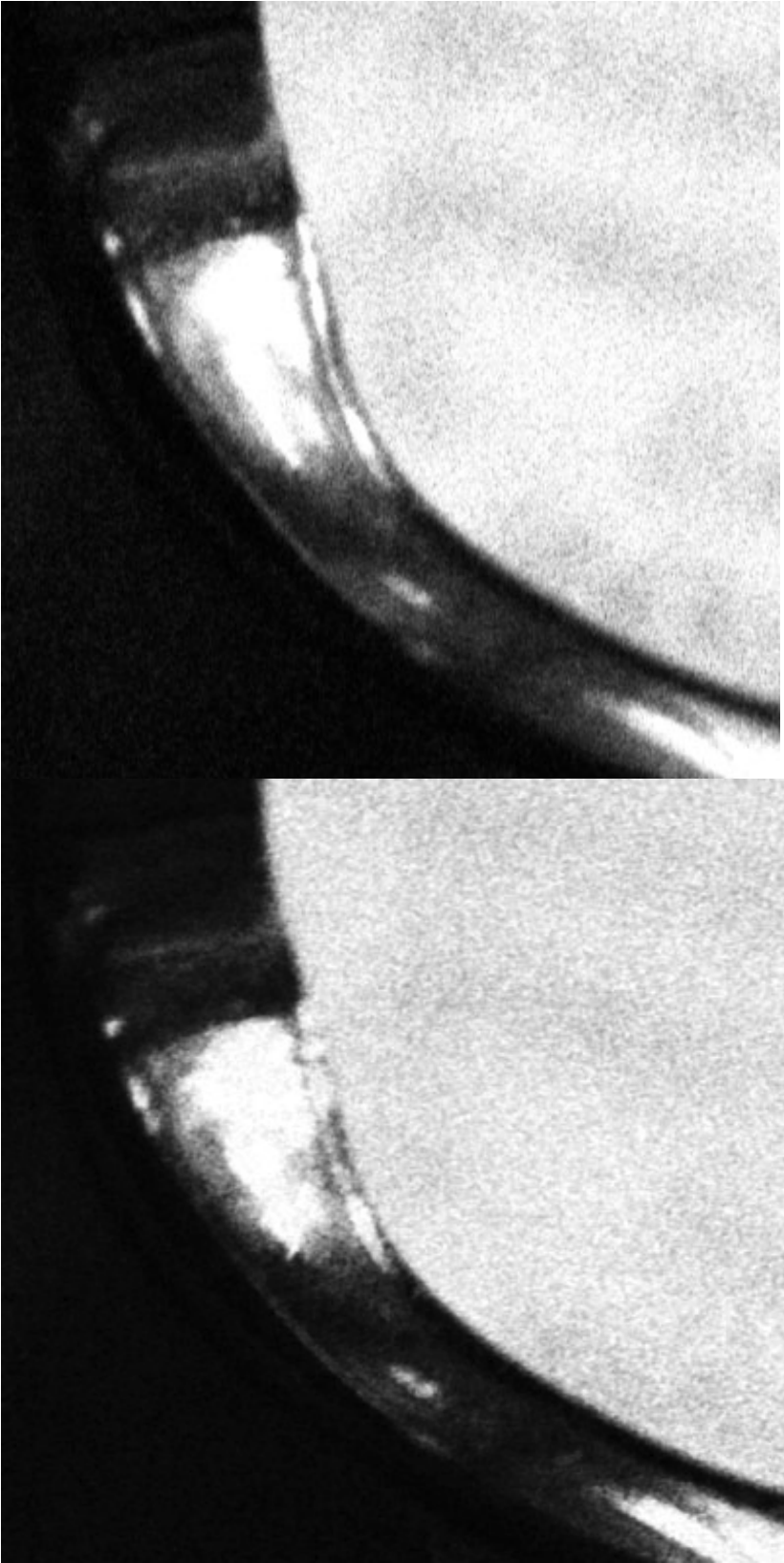


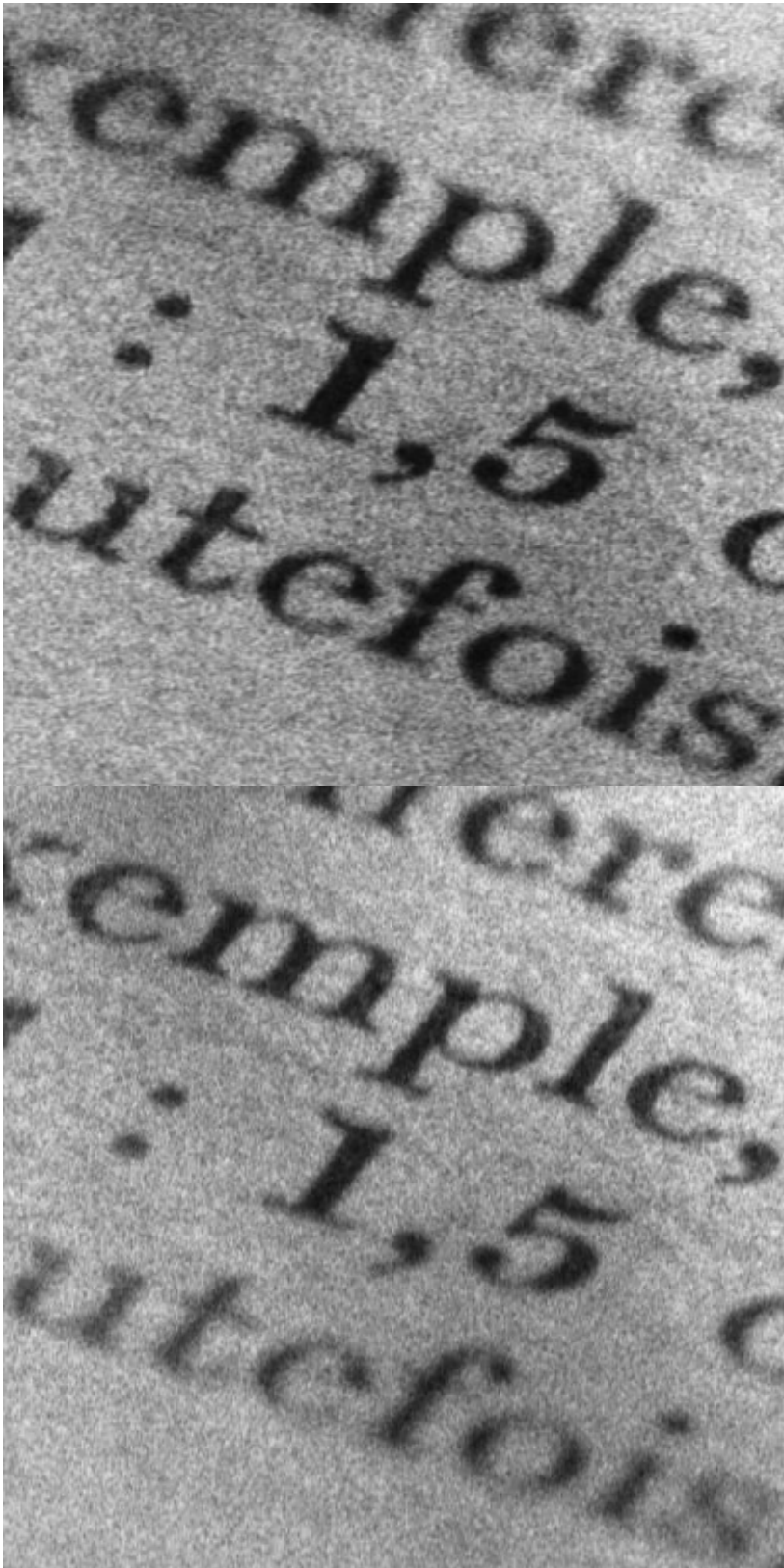


difference is detail—100%—such as would be clearly expressed in a print—the aesthetic









Copyright © 2007 Grubba Software
<http://www.grubba.com/magazines/grubba/index.html>
